



Collamat® C 4300

Labelling Your Product - Our Competence.

Swiss Modular Labellers 

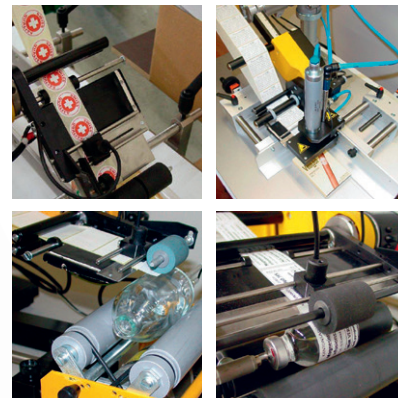
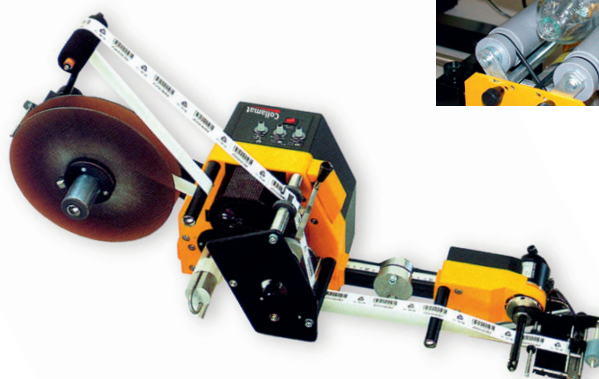
Collamat®

Collamat® C 4300

The all-round labeller. With the Collamat® C 4300 labeller you get a perfect solution for any standard application.

The Collamat® C 4300 is compact, space-saving, easy to operate, and offers a sufficient speed range for medium production capacity. The Collamat® C 4300 is easy to operate, minimize the training and the change-over times.

The Collamat® C 4300 has a attractive price for a reliable and accurate labelling solution. The typical Collamat® modularity allows an optimal configuration of the system in accordance to one's production requirements. Designed for semi or fully automated applications, the Collamat® C 4300 offers a great solution for smaller productions with demands to long lasting functionality, accuracy and reliability.



FEATURES

Flexibility – Wide application range thanks to the availability of various applicators for specific products; a spring loaded flap applicator for pass-through labelling of uneven products; flap applicator with magnet for pass-through labelling in small cavities or of light products; blow-on for labelling without contact with the product; tamp-on for stand-still labelling or labelling in cavities.

Collamat® design – Electronics, drive unit, backing paper re-winder and control panel integrated in one, space-saving unit.

Modularity – The Collamat® well-known module rail design facilitates the installation of printers, scanners or other devices. Easy adaptation to new applications. Fast change-over times.

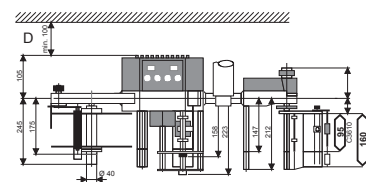
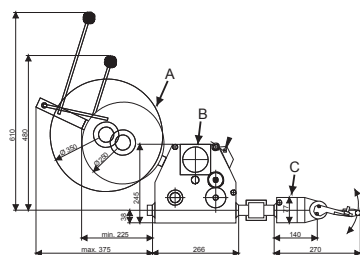
Easy operation – Settings can easily be changed by four potentiometers.

Fast set up – Set the label scanner, pre-dispensing, label position and application speed – and you are ready to work.

TECHNICAL DATA

Operational speed	1 – 25 m/min (3 ¼ – 82 ft / min)
Operational width	95 mm (3 ¾ in.) or 160 mm (6 ¼ in.)
Labelling accuracy	± 1 mm (1/25 in.)
Min. label length	10 mm (13/32 in.)
Max. label reel diameter	250 mm (9 ¾ in.) or 350 mm (13 ¾ in.)
Connectivity	Outputs: Signals for printer and error Inputs: Goods scanner and end of label detection
Settings	By potentiometers
Drive	2-phase stepper motor
Control	Microprocessor
Voltage	115 / 230 V; 60 / 50 Hz; 138 VA Feed button for manual label dispensing, i.e. threading the label web.
Applicators	Spring loaded flap, flap with magnet, blow-on, tamp-on
Version	Right or left
Options	side labelling kit, extended peel plate, pressure brushes, label end detection, digital control box, etc.
Approbation	CE

All data are indicative and may be subject to alteration



Collamat®

Bodenmattstrasse 34, CH-4153 Reinach, Switzerland
Tel.: +41 61 756 28 28, Fax: +41 61 756 29 29
contact@collamat.ch, www.collamat.ch

Swiss Modular Labellers 